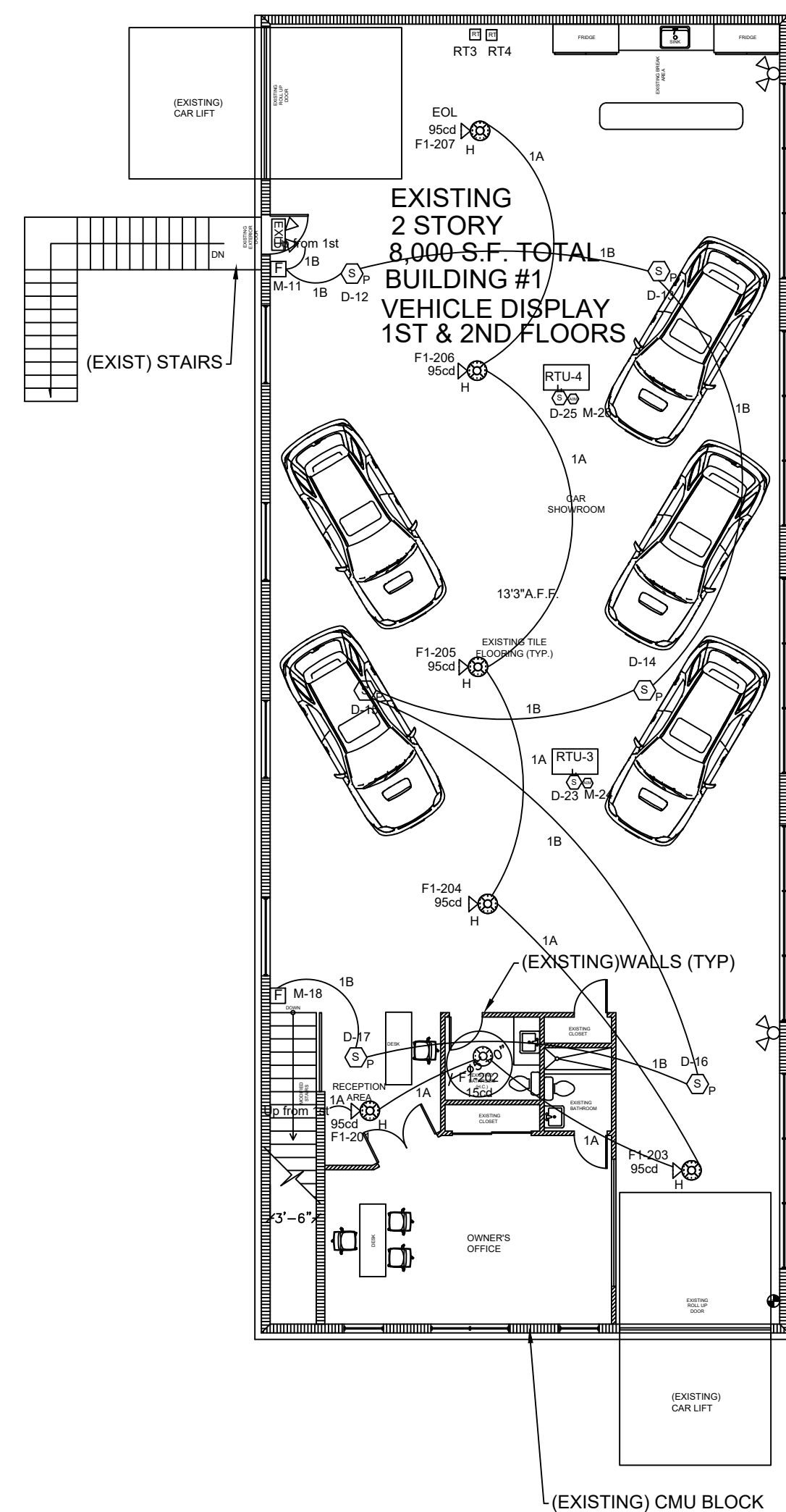
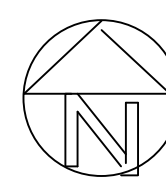


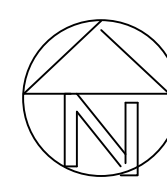
FIRE ALARM PLAN BLDG#1(1ST FL.)

SCALE: 1/8"=1'-0"



FIRE ALARM PLAN BLDG#1(2ND FL.)

SCALE: 1/8"=1'-0"



NARRATIVE

— FIRE ALARM CONTRACTOR TO INSTALL NEW FIRE ALARM SYSTEM AT 929 S.W. 8TH STREET POMPANO BEACH FLORIDA. THE NEW BUILDING 6861 IS FULLY SPRINKLERED. THE ALARM PANEL WILL BE LOCATED AT THE FRONT ENTRANCE. A CESTARLINK CELLULAR COMMUNICATOR WILL BE LOCATED NEXT TO THE FACP.

ALARM SYSTEM TO BE IN ACCORDANCE WITH LOCAL CODES AND MIAMI DADE COUNTY CODE. THE EXISTING BUILDING DEVICES TO REMAIN. EXISTING HORNSTROBE AND STROBES TO BE CONNECTED TO NAC CIRCUIT AND SLC OF EXISTING FACP. THE PRIMARY POWER FOR COMMUNICATOR WILL BE FROM A DEDICATED CIRCUIT IN ACCORDANCE WITH NFPA 72 10.6.5.1.2. THE WIRING FROM THE PRIMARY POWER TO THE COMMUNICATOR WILL BE PROTECTED BY CERTIFIED CABLE PROTECTING THE WIRE FROM MECHANICAL DAMAGE IN ACCORDANCE WITH NFPA 72 10.6.5.3. THIS WILL BE A CENTRAL STATION SERVICE FIRE ALARM SYSTEM IN ACCORDANCE WITH MIAMI DADE COUNTY CODE SECTION 14-61(1).

SCOPE OF WORK: 1. INSTALL(1) NEW STARLINK SLE MAX2-FIRE CELLULAR COMMUNICATOR
2. INSTALL(1) NEW ES50X FIRE ALARM CONTROL PANEL FOR CLUBHOUSE.
3. INSTALL(1) NEW DOCUMENT STORAGE BOX.
4. INSTALL(4) BGV2LX P.A. STATIONS
5. INSTALL(12) AD3865 SMOKE DETECTORS
6. INSTALL(1) MMS-301 MONITOR MODULE FOR CELLULAR COMMUNICATOR
7. INSTALL(1) STROBE AND 7 HORNSTROBES WHERE SHOWN
8. INSTALL(1) NEW REMOTE ANNUNCIATOR
9. INSTALL(2) ISOLATOR MODULES.
10. INSTALL(4) D385 DUCT SMOKE DETECTORS(4) REMOTE TEST SWITCHES

TO BE WIRED, CONNECTED, AND LEFT IN FIRST CLASS OPERATING CONDITION. ALL PANELS AND PERIPHERAL DEVICES SHALL BE THE STANDARD PRODUCT OF A SINGLE MANUFACTURER AND SHALL DISPLAY THE MANUFACTURER'S NAME ON EACH COMPONENT. THE CATALOGUE NUMBERS SPECIFIED UNDER THIS SECTION ARE THOSE OF FIRE LITE AND CONSTITUTE THE TYPE, QUALITY OF ALARM, MATERIAL, AND OPERATING FEATURES.

INSTALL NEW FIRE ALARM SYSTEM.

NEW CELLULAR COMMUNICATOR IS POWERED BY NEW FACE

FIRE ALARM SYSTEM, SEE BUILDING DATA FOR DETAILS.

BUILDING DATA

- TOTAL SQ. FT: APPROX. 4,091 SQ. FT. PER FLOOR
 - STORIES: 2 CEILING: APPROXIMATELY 12' A.F.F.
 - FIRE ALARM PANEL: FIRELITE ES50X
 - CELLULAR COMMUNICATOR: SLE-MAX2-CFB(DUAL)
- OCCUPANCY: BUSINESS

OCCUPANCY: BUSINESS

REVISIONS

THE NEW AUTO TOY STORE

929 S.W. 8TH STREET

POMPANO BEACH, FLORIDA 33069

DRAWING TYPE

FIREALARM FLOOR PLAN

SEAL

CROSS COUNTRY FIRE AND SECURITY

NORTH PH: 561-562-1344

License#: 200001697

9200 MELODY RD.

LAKEWORTH FL. 33467

DATE: 04/02/26

APPROVED BY _____

SCALE: $3/32"=1"-0"$

DRAWN BY K.F.R.

CHECKED BY

SHEET 1 OF 2

BOUKZAM P.E CONSULTING. INC.

ELECTRICAL * MECHANICAL * PLUMBING *
FIRE PROTECTION * 40-YEAR INSPECTIONS

ANDREW BOUKZAM
10532 EL PARAISO PL, DELRAY BEACH, FL 3344
EMAIL: ANDREWBOUKZAM@GMAIL.COM
PH:561-350-1539 P.E.# 98800